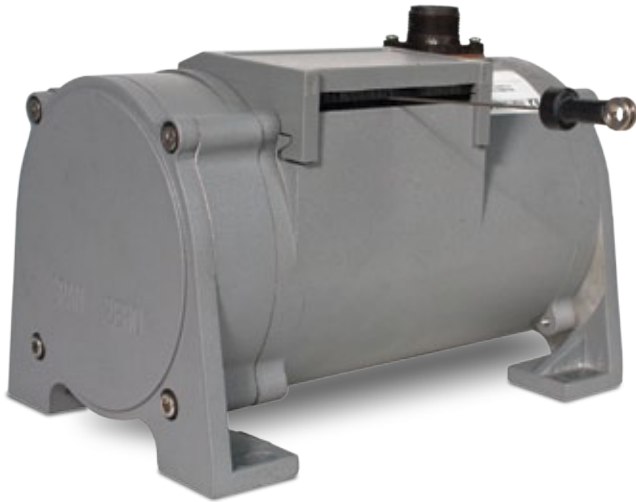


PT9000 Series

CABLE-ACTUATED POSITION SENSORS



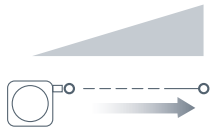
- 550" (14m) Linear Measurement Range
- Heavy Industrial Environments
- Aluminum or Stainless Steel Enclosure Options
- IP68/NEMA 6 Protection

The PT9000 series are for long stroke position and velocity sensing applications. Excellent choice for hydraulic cylinder synchronizing, telescoping mechanism extension and water gate position. Thousands of configurations are available to exactly meet application requirements and lead times are frequently 1-2 weeks. Hazardous area certified units are available.

Cable-Actuated Sensors are easy and quick to install as critical alignment is not required. They retract to a height a fraction of the measurement range and provide a highly repeatable, high-resolution output.

Connect To Product Datasheets Below

Analog Output



PT9101

 Voltage
Divider

500, 1K, 5K, 10K ohm
& bridge circuit

[click ► here](#)

PT9301


Position
& Velocity

voltage divider position
& DC velocity signals

[click ► here](#)

PT9420

4..20mA
0..20mA

hazardous area
options 

[click ► here](#)

PT9510

0..5 Vdc
0..10Vdc

0..5, 0..10, -5..+5
& -10..+10 Vdc

[click ► here](#)

Digital Output



PT9150

Incremental
Encoder

10-250 ppi

[click ► here](#)

PT9232

RS232

16-bit absolute
position

[click ► here](#)

PT9CN

CANbus
J1939

16-bit absolute
position

[click ► here](#)

PT9DN

DeviceNET®

16-bit absolute
position

[click ► here](#)