

# FN7110 Double Range Load Cell



- Double S-Beam Load Cell
- Integrated Mechanical Stops
- 10/100 N to 1,000 /10,000 N (2/20 lbf to 200/2,000 lbf)
- High resolution
- High Accuracy
- Build in Amplifiers on request

## DESCRIPTION

The **FN7110** features high accuracy measurement channels in two ranges in the same load cell. The standard ratio between the ranges is 1 to 10, and standard load range combinations go from 0-10 and 0-100 N through 0-1000 and 0-10,000 N. The **FN7110**'s percentage accuracy is the same over each range in the load cell. In practice one maintains accuracy of 0.1% over the high force range even in the first 10% of F.S.

During measurement, once the lower range sensing element reaches its designed full scale limit, mechanical stops protect it against overloads, in tension and compression, up to 12 times the full scale limit of the higher range sensing element (which is equivalent to 12 times the full scale limit of the lower range). For high-level output, a model with an integrated amplifier is available.

With many years of experience as a designer and manufacturer of sensors, Measurement Specialties, Inc. often works with customers to design or customize sensors for specific uses and testing environments. To meet your needs we also offer complete turnkey systems. The matched components (sensor, power, amplifier and digital display) are formatted, calibrated and ready for immediate use.

## FEATURES

- Double Full Scale Range
- Tension and Compression - Other ranges on request
- Accuracy : 0.1% F.S.
- Integrated Mechanical Stops
- High Level Output Model with Integrated Amplifier

## APPLICATIONS

- Process Control Equipment
- Robotics and Effectors
- Product Validation Testing
- Laboratory and Research

## STANDARD RANGES

<b>F.S. Ranges in N</b>	10/100	50/500	100/1k	200/2k	500/5k	1k/10k
<b>F.S. Ranges in lbf</b>	2/20	10/100	20/200	40/400	100/1k	200/2k

# FN7110 Double Range Load Cell

## PERFORMANCE SPECIFICATIONS

All values are typical at temperature 20 ±1° C

PARAMETERS	
Operating Temperature Range [OTR]	-20 to 80° C [-4 to 176° F]
Compensated Temperature Range [CTR]	0 to 60° C [32 to 140° F]
Zero Shift in CTR	<0.5% F.S. / 50° C [/100° F]
Sensitivity Shift in CTR	<1% of reading / 50° C [/100° F]
Range [F.S.]	0-10/0-100 N to 0-1/0-10 kN [0-2/0-20 to 0-200/0-2000 lbf]
Over-Range	
Without Damage	1.2 x F.S. of the higher range
Accuracy	
Linearity	±0.1% F.S. of each range

### Electrical Characteristics

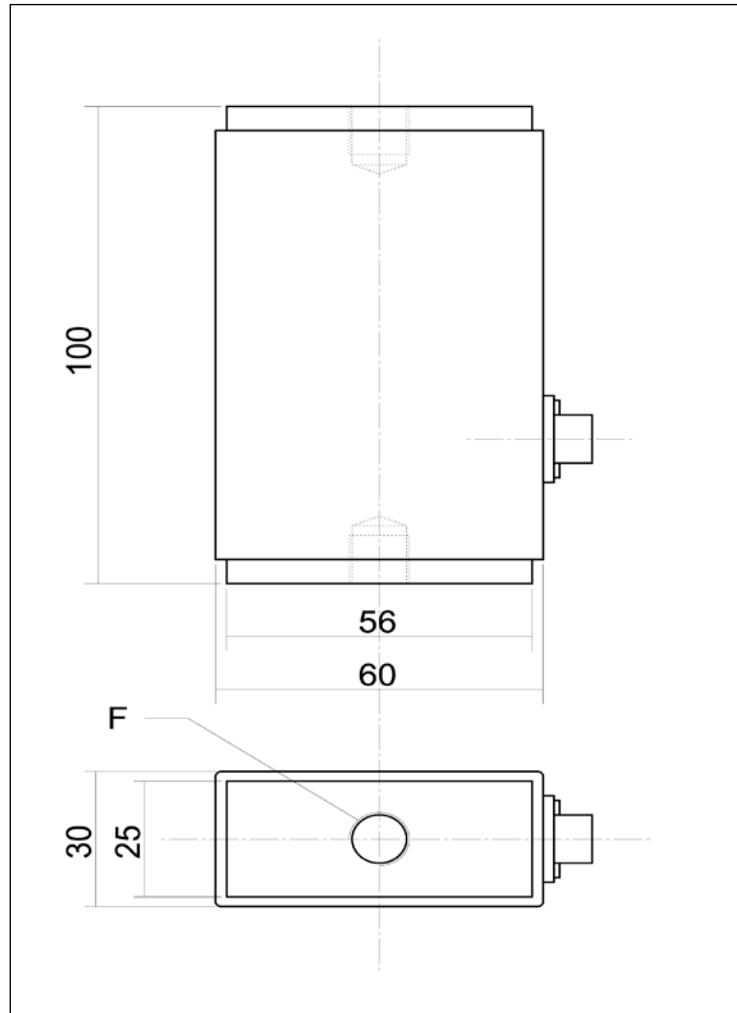
Model	FN7110	FN7110-A1	FN7110-A2
Supply Voltage	10Vdc	10 to 30Vdc	±15Vdc (±12 to 18Vdc)
F.S. Output <sup>3</sup>	±2mV/V	±2V ±5% F.S.	±5V ±5% F.S.
Zero Offset <sup>3</sup>	<5% F.S.	2.5V ±5% F.S.	0V ±5% F.S.
Input Impedance/Consumption	150 to 200Ω	<50mA	<50mA
Output Impedance	300 to 400Ω	1 kΩ <sup>4</sup>	1 kΩ <sup>4</sup>
Insulation under 50Vdc	≥100MΩ	≥100MΩ	≥100MΩ

### Notes

1. Cable Termination: Connector output including mate, prewired, standard length 2 m
2. Material: Body in aluminum alloy or stainless steel depending on F.S.
3. Other signal output on request
4. Output impedance < 100Ω on request
5. CE conformance according to EN 61010-1, EN 50081-1, EN 50082-1

# FN7110 Double Range Load Cell

## DIMENSIONS & WIRING SCHEMATIC (IN METRIC AND IMPERIAL)



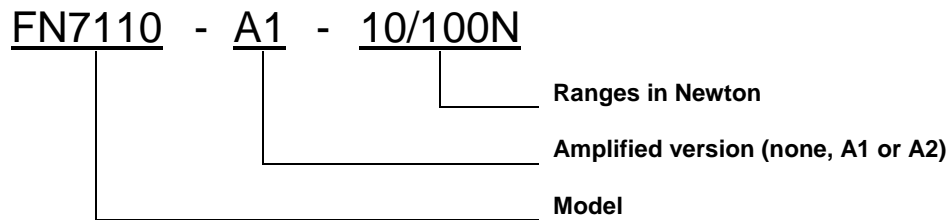
F.S. Ranges in N [in lbf]	10/100 [2/20]	50/500 [10/100]	100/1k [20-200]	200/2k [40/400]	500/5k [100/1k]	1k/10k [200/2k]
F (Thread)	M6	M10				
Material	Aluminium					Stainless Steel

# FN7110 Double Range Load Cell

## OPTIONS

<b>A1</b> : Amplified Tension output with unipolar power supply
<b>A2</b> : Amplified Tension output with bipolar power supply

## ORDERING INFO



### NORTH AMERICA

Measurement Specialties, Inc.  
Vibration Design Center  
32 Journey - Suite 150  
Aliso Viejo, CA 92656  
United States USA  
Tel: 1-949-716-0877  
Fax: 1-949-916-5677  
[t&m@meas-spec.com](mailto:t&m@meas-spec.com)

### EUROPE

Measurement Specialties  
(Europe), Ltd.  
26 Rue des Dames  
78340 Les Clayes-Sous-Bois,  
France  
Tel: +33 (0) 130 79 33 00  
Fax: +33 (0) 134 81 03 59  
[cs.lcsb@meas-spec.com](mailto:cs.lcsb@meas-spec.com)

### ASIA

Measurement Specialties  
(China), Ltd.  
No. 26 Langshan Road  
Shenzhen High-Tech Park (North)  
Nanshan District, Shenzhen  
518057  
China  
Tel: +86 755 3330 5088  
Fax: +86 755 3330 5099  
[pfg.cs.asia@meas-spec.com](mailto:pfg.cs.asia@meas-spec.com)

The information in this sheet has been carefully reviewed and is believed to be accurate; however, no responsibility is assumed for inaccuracies. Furthermore, this information does not convey to the purchaser of such devices any license under the patent rights to the manufacturer. Measurement Specialties, Inc. reserves the right to make changes without further notice to any product herein. Measurement Specialties, Inc. makes no warranty, representation or guarantee regarding the suitability of its product for any particular purpose, nor does Measurement Specialties, Inc. assume any liability arising out of the application or use of any product or circuit and specifically disclaims any and all liability, including without limitation consequential or incidental damages. Typical parameters can and do vary in different applications. All operating parameters must be validated for each customer application by customer's technical experts. Measurement Specialties, Inc. does not convey any license under its patent rights nor the rights of others.